



Norsat

International Inc.

Innovative Communication Solutions



BDC KU-BAND 1000 SERIES



TYPICAL SPECIFICATIONS

Noise figure	10 dB
L.O. stability (over temperature excl offset)	±30 kHz
Phase noise (SSB)	-70 dBc/Hz at 1 kHz -85 dBc/Hz at 10 kHz -100 dBc/Hz at 100 kHz
Input VSWR	1.9 : 1
Output VSWR	2.0 : 1

Conversion gain	20 dB
Gain stability over temperature	±2.5 dB at any constant frequency
Output P1dB	6 dBm
Power requirements	+15 to +24 V
Current drain	260 mA
Dimensions	107 (L) x 78 (W) x 44 (H) mm (4.2 x 3.1 x 1.7 in)
Weight	300 g / 10.6 oz
Temperature Range	-40°C to +60°C

FREQUENCY BANDS AVAILABLE

Typical service	1000A	1000B	1000C	1000AE	1000GE
Input frequency (GHz)	11.70 to 12.20	12.25 to 12.75	10.95 to 11.70	11.70 to 12.75	10.70 to 11.70
L.O. frequency (GHz)	10.75	11.30	10.00	10.75	9.75
Output frequency (MHz)	950 to 1450	950 to 1450	950 to 1700	950 to 2000	950 to 1950

HOW TO ORDER

MECHANICAL DIAGRAM

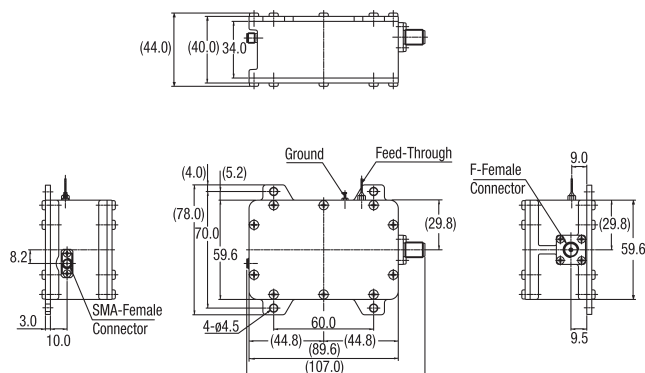
BDC-1000AND

D - DC Power through Feed-Through and Output Connector
C - DC Power through Output Connector
P - DC Power through Feed-Through

OUTPUT CONNECTOR
 F - F Connector
 N - N Connector
 S - SMA Connector

FREQUENCY
 A - 11.70 - 12.20 GHz
 B - 12.25 - 12.75 GHz
 C - 10.95 - 11.70 GHz
 AE - 11.70 to 12.75 GHz
 GE - 10.70 to 11.70 GHz

BLOCK DOWNCONVERTER
 (Input Connector SMA)



Norsat
International Inc.

North America
+1 800 644 4562

Asia Pacific
+1 604 821 2813

Europe, Middle East & Africa
+44 1522 730 800

South America
+1 604 821 2835

Online
sales@norsat.com
www.norsat.com