



Norsat

International Inc.

Innovative Communication Solutions



BDC KU-BAND EXT REF 1000X SERIES



TYPICAL SPECIFICATIONS

Noise figure	15 dB
L.O. stability	Phase Locked to External Reference
Phase noise (SSB)	-70 dBc/Hz at 1 kHz -85 dBc/Hz at 10 kHz -100 dBc/Hz at 100 kHz
Input VSWR	1.9 : 1
Output VSWR	2.0 : 1
Input Connector	SMA (f)

Conversion gain	20 dB
Gain stability over temperature	±2.5 dB at any constant frequency
Output P1dB	6dBm
Power requirements	+15 to +24 V
Current drain	260 mA
Dimensions	107 (L) x 78 (W) x 44 (H) mm (4.2 x 3.1 x 1.7 in)
Weight	300 g / 10.6 oz
Temperature Range	-40°C to +60°C

FREQUENCY BANDS AVAILABLE

Typical service	1000XA	1000XB	1000XC	1000XAE	1000XGE
Input frequency (GHz)	11.70 to 12.20	12.25 to 12.75	10.95 to 11.70	11.70 to 12.75	10.70 to 11.70
L.O. frequency (GHz)	10.75	11.30	10.00	10.75	9.75
Output frequency (MHz)	950 to 1450	950 to 1450	950 to 1700	950 to 2000	950 to 1950

HOW TO ORDER

BDC-1000XAND-10S

10 MHz via separate SMA connector

D - DC Power through Feed-Through and Output Connector

C - DC Power through Output Connector

P - DC Power through Feed-Through

OUTPUT CONNECTOR

F - F Connector

N - N Connector

S - SMA Connector

FREQUENCY

A - 11.70 - 12.20 GHz

B - 12.25 - 12.75 GHz

C - 10.95 - 11.70 GHz

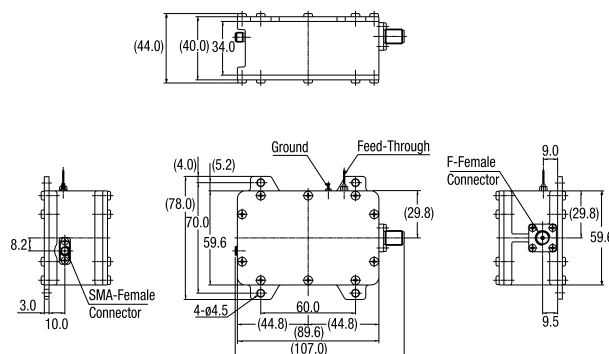
AE - 11.70 to 12.75 GHz

GE - 10.70 to 11.70 GHz

EXT REF

BLOCK DOWNCONVERTER

MECHANICAL DIAGRAM



Norsat
International Inc.

North America
+1 800 644 4562

Asia Pacific
+1 604 821 2813

Europe, Middle East & Africa
+44 1522 730 800

South America
+1 604 821 2835

Online
sales@norsat.com
www.norsat.com