

# TI Filter, C Band Radar Elimination Filter (3.625 - 4.8 GHz)



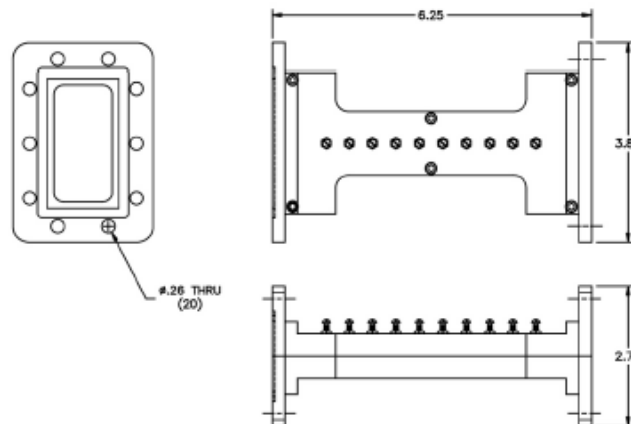
This filter protects the extended C Band of 3.625 - 4.8 GHz from potential interference originating below or above the band.

- Very low insertion loss = minimal signal degradation
- Easy bolt-on installation and no power supply required



**FLT-MFC-13962**

Specifications	
Passband	3.625 - 4.8 GHz
Passband Loss	0.2 dB Approximately at Center Band 0.3 dB Approximately Roll-Off at Band Edges
Passband VSWR	1.5:1 Typical
Group Delay Variation	5 nS Max.
Rejection	45 dB Min. at 3.44 GHz / 4.99 GHz 55 dB Typ. at 3.39 GHz / 5.03 GHz 70 dB Typ. at 3.30 GHz / 5.10 GHz 90 dB Min. from 5.8 - 15.0 GHz
Flanges	CPR229G (Input), CPR229F (Output)
Weight	1.125 lbs. (Approximately 0.51 kg)
Dimensions	6.25" x 3.88" x 2.75" (159 mm x 98 mm x 70 mm)
Finish	Gloss White Lacquer



FLT-MFC-13962\_REV002

Specifications are subject to change without notice