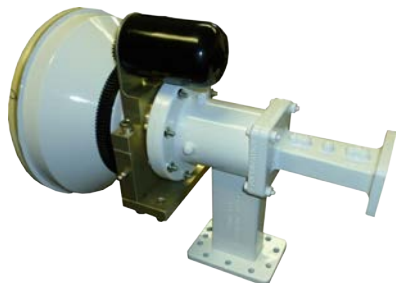


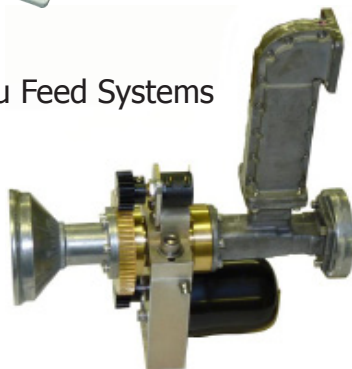
# Upgrade Existing Antennas to Motorized Dual Axis



*Your Trusted Source for Satellite Equipment*



Motorized C and Ku Feed Systems



## **Available in the following sizes:**

- 1.8m
- 2.4m
- 3.0m
- 3.4m
- 3.7m

Viking Satcom offers upgrade kits to convert existing "in the field" antennas to Motorized Dual Axis Systems. Motorized Feed Systems are also available for 3 Axis Motorization. The system will allow the flexibility to move from satellite to satellite or for Inclined Orbit Tracking Applications.

The Dual Axis upgrade kits are available for use with Prodelin and Skyware Global Transmit Receive and Receive Only Antennas. The reflector sizes that are supported are 1.8, 2.4, 3.0 and 3.7 meter. Contact Viking for a full list of antennas that are currently available to be upgraded.

## **Features:**

- Upgrade Existing Antennas to Motorized Dual Axis
- Extended Azimuth and Elevation Travel
- For occasional use programming, Redundancy or Inclined Orbit Tracking
- Mounts on 6 5/8" OD Mast
- Includes Dual Axis Controller and Azimuth and Elevation Motors

## **Options / Accessories:**

- Motorized C and Ku Feed Systems
- Inclined Orbit Tracking Controller
- Deicing Systems
- Ground or Roof Mounts

*Your Trusted Source for  
Satellite Equipment*



[www.vikingsatcom.com](http://www.vikingsatcom.com)

Viking SatCom is a leading manufacturer and distributor of commercial satellite antenna products.

Viking Satcom offers a “One Stop Shop” approach to system integrators and resellers through an extensive product line consisting of high quality satellite antennas, RF peripheral equipment, and wireless communication products.

With Corporate offices located in Albion, Michigan, Viking SatCom offers a complete line of satellite products, communication systems, and accessories at cost effective prices, making Viking SatCom your most trusted and experienced provider of satellite equipment.

We have years of experience in technical and commercial knowledge as well as a “Hands On” experience level of large program management projects. Past programs include or involved Large Satellite Earth Stations, VSAT & DTH networks, and satellite broadcasting entities.

## Viking Satcom Product Groups:



Transmit Receive  
VSAT Antennas



Receive Only  
Antennas



Motorized VSAT  
Inclined Orbit  
Tracking Antennas



Mobile, Auto-Point  
Antennas



Direct To Home  
Antennas



Quick-Deploy  
Antennas



RF  
Accessories

NAV-Upgrade\_PS\_REV001

[sales@vikingsatcom.com](mailto:sales@vikingsatcom.com) • [www.vikingsatcom.com](http://www.vikingsatcom.com)

T: 517.629.3000 • F: 517.629.2379 • 704 North Clark Street • Albion, MI